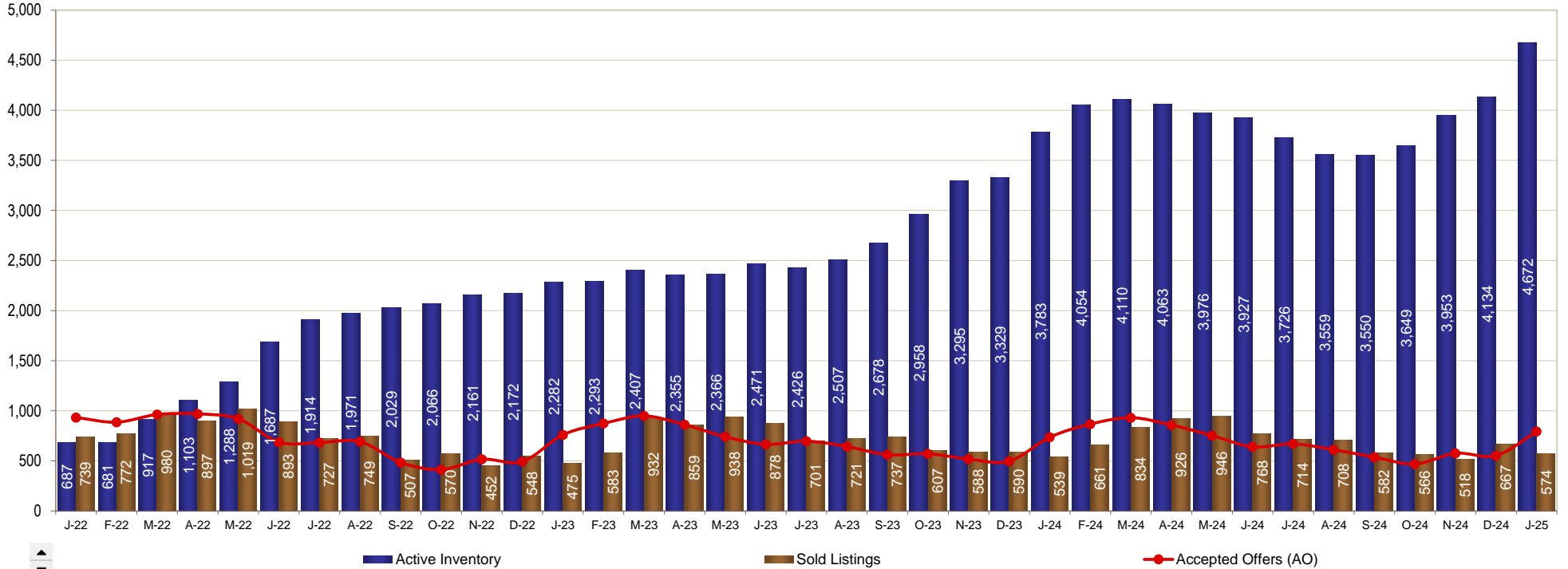


Market Trends - Active Inventory vs Sold Listings vs Contracts



FILTER = Prop. Types: SFH County: Sarasota

Statistic	Curr Mo	Last Mo	# Var	% Var	Pr Yr Mo	# Var	% Var	YTD	PY YTD	# Var	% Var	LTM	PR LTM	# Var	% Var
Active Inventory	4,672	4,134	538	13%	3,783	889	23%	NA	NA			NA	NA		
Sold Listings	574	667	-93	-14%	539	35	6%	574	539	35	6%	8,464	8,673	-209	-2%
Accepted Offers (AO)	793	553	240	43%	736	57	8%	793	736	57	8%	8,257	8,313	-56	-1%

Statistic	J-22	F-22	M-22	A-22	M-22	J-22	J-22	A-22	S-22	O-22	N-22	D-22	J-23	F-23	M-23	A-23	M-23	J-23	J-23	A-23	S-23	O-23	N-23	D-23	J-24	F-24	M-24	A-24	M-24	J-24	J-24	A-24	S-24	O-24	N-24	D-24	J-25
Active Inventory	687	681	917	1,103	1,288	1,687	1,914	1,971	2,029	2,066	2,161	2,172	2,282	2,293	2,407	2,355	2,366	2,471	2,426	2,507	2,678	2,958	3,295	3,329	3,783	4,054	4,110	4,063	3,976	3,927	3,726	3,559	3,550	3,649	3,953	4,134	4,672
Sold Listings	739	772	980	897	1,019	893	727	749	507	570	452	548	475	583	932	859	938	878	701	721	737	607	588	590	539	661	834	926	946	768	714	708	582	566	518	667	574
Accepted Offers (AO)	933	886	963	969	920	687	683	692	484	413	516	493	760	873	949	861	741	665	697	644	561	571	518	497	736	867	931	858	753	640	670	611	537	468	576	553	793



Based on information from Stellar MLS. Due to MLS reporting methods and allowable reporting policy, this data is only informational and may not be completely accurate. Therefore, Coldwell Banker Residential Real Estate does not guarantee the data accuracy. Data maintained by the MLS's may not reflect all real estate activity in the market. Owned and Operated by NRT LLC.